

# CHAMOT

## Recombinant Human FGF-16

CM105-5HP  
CM105-20HP  
CM105-100HP  
CM105-500HP  
CM105-1000HP



CHAMOT

喬默生物技術(上海)有限公司  
CHAMOT BIOTECHNOLOGY CO., LTD.

# CONTENT

**1** 产品简介

**2** 产品组成

**3** 产品储存

**4** 产品使用

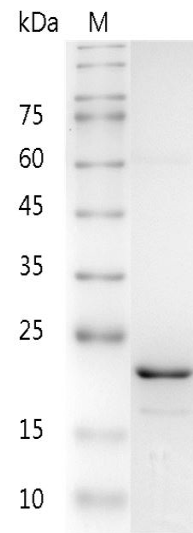
## Recombinant Human FGF-16 (Fibroblast growth factor-16)

编号:	CM105-5HP CM105-20HP CM105-100HP CM105-500HP CM105-1000HP	规格:	5 µg 20 µg 100 µg 500 µg 1 mg
类别:	重组蛋白	应用:	Functional Assay

### 产品简介

**描述:** FGF-16 is a member of the fibroblast growth factor (FGF) family. FGF family members possess broad mitogenic and cell survival activities, and are involved in a variety of biological processes, including embryonic development, cell growth, morphogenesis, tissue repair, tumor growth and invasion. FGF16 expression is markedly increased in ovarian tumors, and FGF16 in conjunction with Wnt pathway contributes to the cancer phenotype of ovarian cells and suggests that modulation of its expression in ovarian cells might be a promising therapeutic strategy for the treatment of invasive ovarian cancers.

**来源:** *Escherichia coli*  
**纯度:** >95% as determined by SDS-PAGE. Ni-NTA chromatography.  
**生物学活性:** Measure by its ability to induce 3T3 cells proliferation. The ED<sub>50</sub> for this effect is < 31 ng/mL. The specific activity of recombinant human FGF-16 is > 3 x 10<sup>4</sup> IU/mg.  
**内毒素检测:** < 0.1 EU per 1 µg of the protein by the LAL method.



SDS- PAGE analysis of recombinant human FGF-16

蛋白序列: MAEVGGVFASLDWDLHGFSSSLGN  
 VPLADSPGFLNERLGQIEGKLQRGSP  
 TDFAHKLGILRRRQLYCRTGFHLEIFP  
 NGTVHGTRHDHSRFGILEFISLAVGLI  
 SIRGVDSGLYLGMNERGELYGSKKLT  
 RECVFREQFEENWYNTYASTLYKHS  
 DSERQYYVALNKDGSPREGYRTKRH  
 QKFTHFLRPV DPSKLPSMSR DLFH  
 YR with polyhistidine tag at the C-terminus

## 产品组成

成分: 从含有 1X PBS, pH 7.4 溶液中冻干的蛋白质.

## 产品储存/运输

产品形式	储存温度	储存时间
冻干粉	-20°C至-80°C	自收到之日起1年
重悬液 (初始)	2°C至8°C	不超过1周
重悬液 (经稀释)	-20°C至-80°C	3到6个月

运输方式: 蓝冰

## 产品使用

- 1、开盖前, 建议3000-3500rpm离心5min。
- 2、推荐使用无菌水重悬冻干粉, 溶液浓度不低于100µg/mL, 不高于1mg/mL, 并室温静置至少20min以充分溶解。勿涡旋剧烈振荡。
- 3、重悬后的溶液, 2 -8°C无菌保存不超过1周。
- 4、如需长期保存, 推荐使用无菌的含载体蛋白 (如0.1 %BSA、10 %FBS 或5 %HSA ) 的溶液进一步稀释 ( 不低于10ug/mL ) 后分装保存, -20°C至 -80°C无菌保存3到6个月。无血清实验需求时, 可更换为 5%海藻糖溶液作为载体。避免反复冻融。

WB= Western Blot; IP= Immunoprecipitation; IF= Immunofluorescence; IHC= Immunohistochemistry;  
 FACS= Fluorescence activated Cell Sorting; FA= Functional Assay